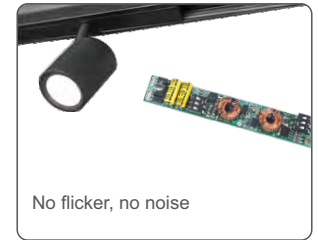


CXR-21A-2(WZS),CXR-28A-2(WZS)

Zigbee 3.0

Zigbee 3.0 Constant Current CCT LED Driver

- Special for magnetic & linear lamp.
- No input polarity.
- DC to DC constant current output, multiple output current settings.
- Tuya smart APP cloud control, support color temp and brightness adjust, delay turn on/off, timer run, scene edit, sleep wake-up and biorhythms function.
- Philips HUE APP control by connect with Philips HUE bridge.
- Voice control, support for Amazon Alexa, Google Assistant, Tmall Genie and Xiaodu voice assistant.
- Can relay and route to each other, up to 15 hops.
- Match with Zigbee 3.0 remote or scene panel control optional.
- Suitable for STUCCHI standard housings, magnetic installation.
- Smooth dimming without flicker, quiet without noise.
- Short circuit, overload, no-load and anti-reverse protection.
- 5-year warranty.



Technical Parameters

Model		CXR-21A-2(WZS)	CXR-28A-2(WZS)
Output	Output Voltage	10~42VDC	
	Output Current	2x(150-500)mA	2x(350-700)mA
	Output Power	1.5W-21W	3.5W-29.4W
	Current Accuracy	±5%	
	Dimming Range	0~100%	
	Channel num	2	
Input	Dimming Interface	Zigbee 3.0	
	Input Voltage	48Vdc ± 5% (No polarity)	
	Input Current	Max.0.47A	Max.0.65A
	Efficiency (Typ)	93%	95%
	Standby Power	<0.5W	
Environment	Working Temperature	-20~50°C	
	Storage Temp	-40~80°C	
	Working Humidity	20~95%RH, non-condensing	
Protection	Overload	Hiccup,recovers automatically after fault condition is removed.	
	Short Circuit	Hiccup,recovers automatically after fault condition is removed.	
	Input Anti-Reverse Protection	No input polarity	
Other	Size	L117xW13.5xH12.2mm	
	Weight	13.1g±2g	

LED Current Selection

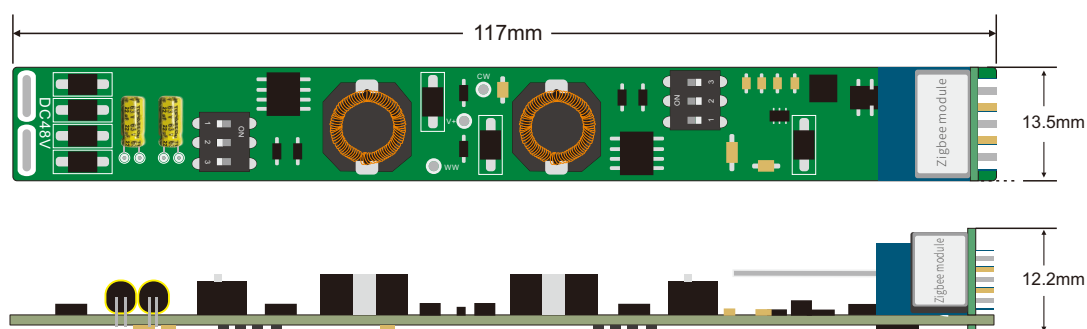
Note: Please select the correct current through the DIP switch on the PCB board when the power is off.



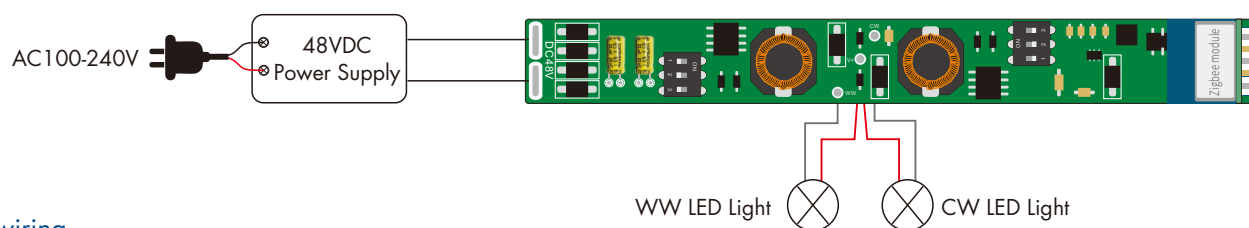
DIP Switch												
CXR-21A-2(WZS)	Output Current	150mA	200mA	250mA	300mA	350mA	400mA	450mA	500mA			
	Output Voltage	10-42V	10-42V	10-42V	10-42V	10-42V	10-42V	10-42V	10-42V		ON	OFF
	Output Power	1.5-6.3W	2-8.4W	2.5-10.5W	3-12.6W	3.5-14.7W	4-16.8W	4.5-18.9W	5-21W			

DIP Switch												
CXR-28A-2(WZS)	Output Current	350mA	400mA	450mA	500mA	550mA	600mA	650mA	700mA			
	Output Voltage	10-42V	10-42V	10-42V	10-42V	10-42V	10-42V	10-42V	10-42V		ON	OFF
	Output Power	3.5-14.7W	4-16.8W	4.5-18.9W	5-21W	5.5-23.1W	6-25.2W	6.5-27.3W	7-29.4W			

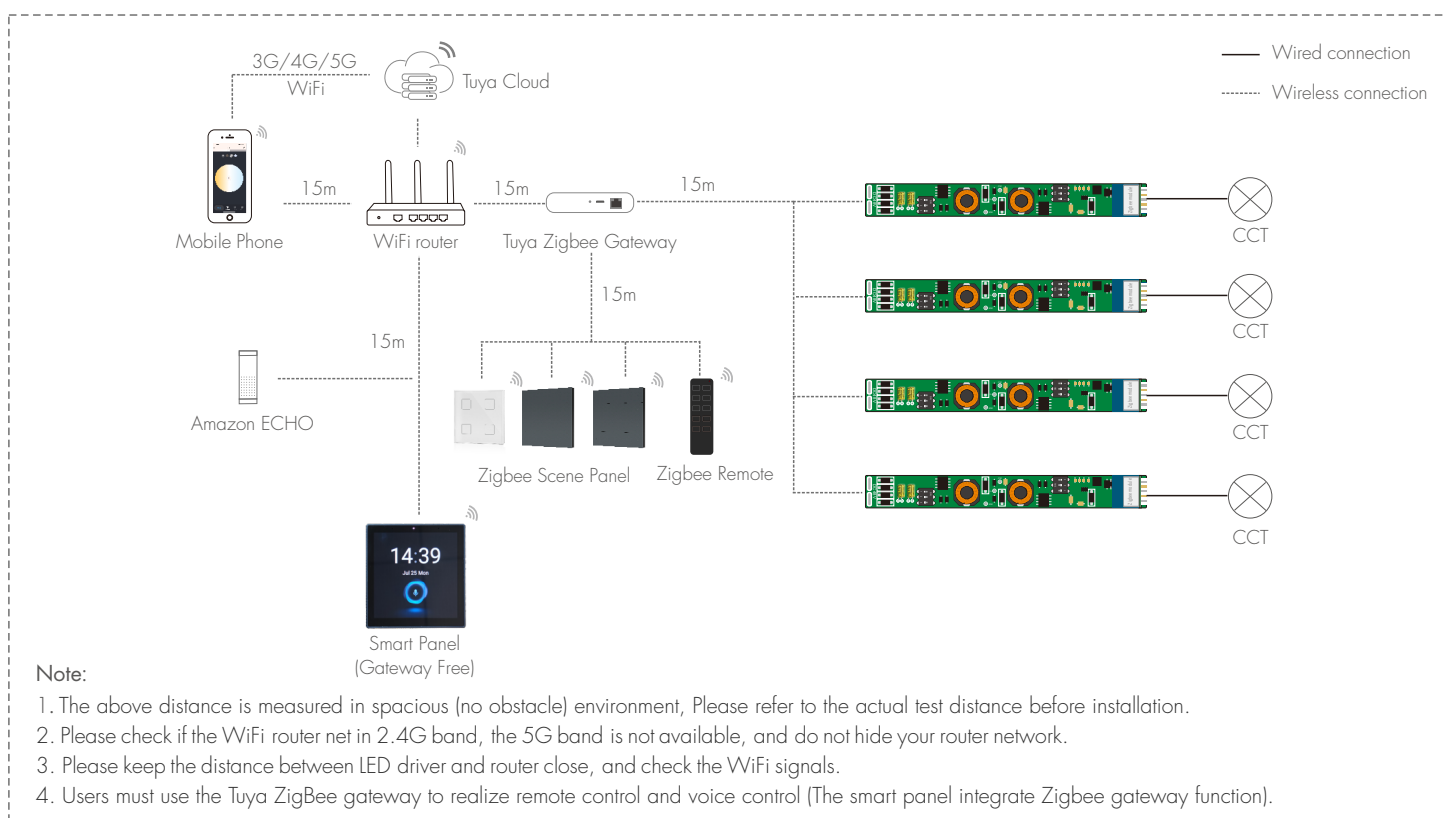
Mechanical Structures and Installations



Wiring Diagram



System wiring



APP Operating Instructions

1. Network pairing

- Download the Tuya smart APP and register an account, search and add the Tuya Zigbee gateway device.
- Quickly repeat power on and off five times to clear the previous network connection, enter pairing mode with the output light breathes blinking.
- Under the gateway, search and add new device. If the network connection is successful, you can find ZBS-CCT devices in Tuya smart APP.

2. Lighting control settings

After pairing the light device, click the device and change brightness and color temperature by touch brightness slide and color wheel.

In "Scene", there are 4 scene can be recalled or customized.

In "Setting", there are Plan, Schedule, Timer, Rhythms, Power-on behavior functions.

