



Model: S1-T

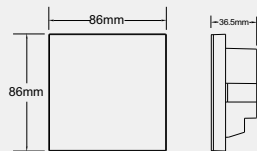
Summary

- Triac dimmable and Mosfet dimmable.
- Built in 2.4Ghz module, can be used as RF dimming remoter, remote control more dimming receivers.
- When direct connect dimmable light, great compatibility with a variety of dimming remoter.
- Leading edge dimming or trailing edge dimming set by dip switch.
- Minimum brightness set by dip switch.
- Ultra sensitive high strength glass touch panel with touch brightness slide in the middle and backlighting.
- To dim and switch single color dimmable LED lamps, traditional incandescent and halogen lights.
- Can work with WiFi-relay controller after install APP on IOS and Android system.

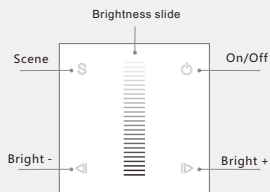
Technical Parameters

- Input voltage: 100-240VAC
- Output voltage: 100-240VAC
- Output current: 1.2A
- Output power: 100-288W
- Remote distance: 30m
- Working temperature: -30°C~55°C
- Product size: L86×W86×H36.5mm
- Net weight: 152g

Dimension



Key function



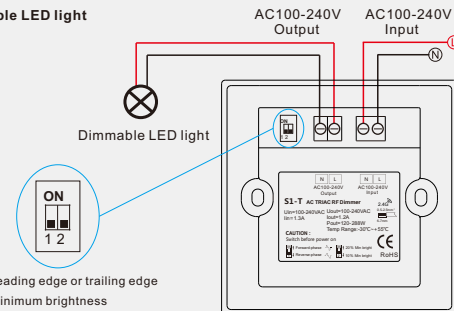
- On/Off:** Turn on/off lights.
- Brightness Slide:** Touch to change the brightness.
- Bright +/-:** Adjust brightness, short press 10 levels, long press 1-5s continuous 256 levels adjustment.
- Scene:** Short press run the scene, long press 2s save.

Panel controller match remoter method

- Match: Turn on light, turn off, immediately press on/off key for 5s, within 5s, press any key of the remoter.
- Delete: Turn on light, turn off, immediately press on/off key for 10s, delete all matched remoters.

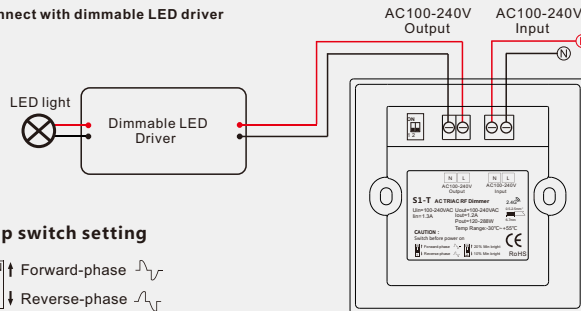
Wiring diagram

Connect with dimmable LED light

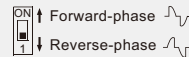


1. Leading edge or trailing edge
2. Minimum brightness

Connect with dimmable LED driver

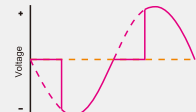


Dip switch setting



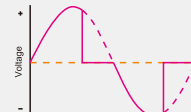
- Select leading edge dimmer or trailing edge dimmer according to your dimmable LED light.

Forward-phase control dimmer (TRIAC)



- Set 20% Min bright
- Set 10% Min bright

Reverse-phase control dimmer

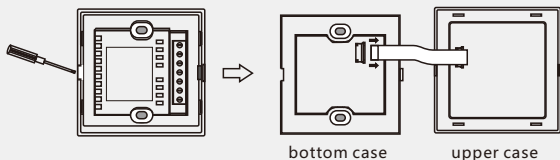


- Set 10% Min bright defaultly.
- If the light flick under 10% Min brightness, you can switch to 20% Min bright to avoid flick.
- If the light still flick under 20% brightness, you need contact saler to customize higher Min bright.

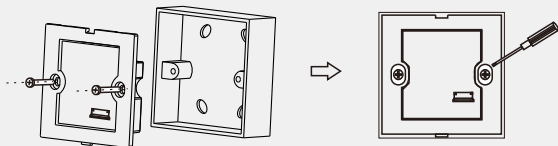
Caution: before power on, you must confirm the selection of dip switch.

Installation diagram

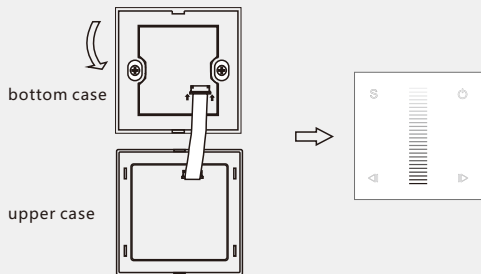
1. Flip panel, inserted into the card edge aperture with a small screwdriver, gently pry and open the panel. pull out FPC lock catch, then remove FPC line.



2. After connect wires, put bottom case into 86 bottom box, put in the screw and tighten.



3. Connect FPC line. then from top to bottom, moderately cover upper case, complete installation.



NOTES:

- In order to ensure safety, turn off the power first before wiring, ensure correct wiring to avoid short circuit.
- In the process of installation, do not damage or twist FPC line, in order to avoid damage.

Malfunctions analysis & troubleshooting

Malfunctions	Causes	Troubleshooting
No light	1. No power. 2. Wrong connection or insecure.	1. Check the power. 2. Check the connection.
No response from the remoter	1. The battery has no power. 2. Beyond controllable distance. 3. The controller did not match the remoter.	1. Replace battery. 2. Reduce remote distance. 3. Re-match the remoter.

Safety & Warnings

1. The product shall be installed and serviced by a qualified person.
2. This product is non-waterproof. Please avoid the sun and rain.
3. Good heat dissipation will prolong the working life of the controller, please ensure good ventilation.
4. Ensure all wire connections and polarities are correct and secure before applying power to avoid any damages to the LED lights.
5. If a fault occurs please return the product to your supplier. Do not attempt to fix this product by yourself.

Warranty Agreement

1. 5-year warranty:
 - The warranty is for free repair or replacement and covers manufacturing faults only.
 - Do not include fees of on site maintenance and consumable parts.
2. Limited Warranty
 - Artificial damage caused by improper use, such as use inappropriate power supply, improper accessories, improper installation, did not follow the instructions, error using or negligence.
 - Any damages caused by force majeure, such as natural disaster, abnormal voltage.
 - The normal use of products caused by aging, wear and tear, but it does not affect the normal use.