

Wall Mounted Touch Panel

Model No.: T20, T20-1, T20-2, T20-3

1-4 Zone dimming switch/Glass touch panel/Wireless remote 30m distance/AAA x 2 battery



T20-1
1 Zone switch



T20-2
2 Zone switch



T20-3
3 Zone switch



T20
4 Zone switch

Features

- Touch panel 1/2/3/4 zone dimming switch RF remote.
- Each zone can remote control multiple Skydance's 2.4G LED controllers.
- Ultra sensitive high strength glass touch panel.
- Touch keys with chord tones and LED indicator.
- Free installation, no wiring, removable.
- AAA x 2 battery powered.
- White & Black glass panel available.

CE RoHS EMC LVD RED

Technical Parameters

Input and Output	
Output signal	RF(2.4GHz)
Working voltage	3VDC(AAA x 2)
Working current	< 5mA(Without tune) < 20mA(with tune)
Standby current	< 20µA
Standby time	1 year
Remote distance	30m [Barrier-free space]

Environment	
Operation temperature	Ta: -30°C ~ +55°C
Case temperature (Max.)	Tc: +65°C
IP rating	IP20

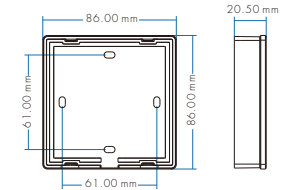
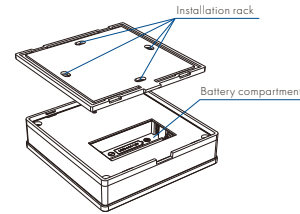
Safety and EMC	
EMC standard [EMC]	ETSI EN 301 489-1 V2.2.3 ETSI EN 301 489-17 V3.2.4
Safety standard [LVD]	EN 62368-1:2020+A11:2020
Radio Equipment [RED]	ETSI EN 300 328 V2.2.2
Certification	CE, EMC, LVD, RED

Warranty	
Warranty	5 years

Weight	
Net weight	160g
Gross weight	190g

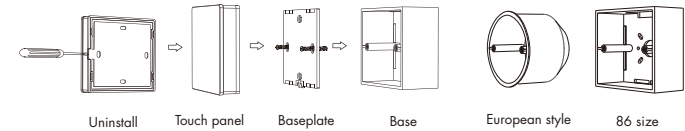
T20, T20-1, T20-2, T20-3 Wall Mounted Touch Panel

Mechanical Structures and Installations



Installation diagram:

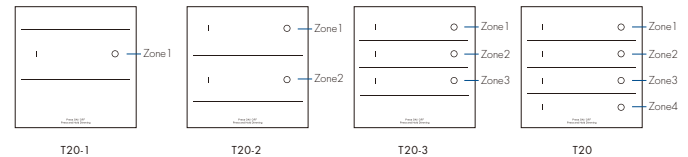
Typical base as below:



To fix the panel, two options are offered for selection:

- Option 1: fix it on the wall with two screws.
- Option 2: adhere it to the wall with paster.

Key function



I — ON key

- Short press: Turn on the light of each zone.
- Long press[1-6s]: Dimming up when light is on.

O — OFF key

- Short press: Turn off the light of each zone.
- Long press[1-6s]: Dimming down when light is on.
- Long press[5s]: Turn on or turn off tone when light is off.

End user can choose the suitable match/delete ways. Two options are offered for selection:

Use the controller's Match key

Match:

Short press match key, immediately press ON key of the touch panel.

The LED indicator fast flash a few times means match is successful.

Delete:

Press and hold match key for 5s to delete all match.

The LED indicator fast flash a few times means all matched remotes were deleted.

Use Power Restart

Match:

Switch off the power of the receiver, then switch on power, repeat again.

Immediately short press ON key 3 times on the touch panel.

The light blinks 3 times means match is successful.

Delete:

Switch off the power of the receiver, then switch on power, repeat again.

Immediately short press ON key 5 times on the touch panel.

The light blinks 5 times means all matched remotes were deleted.

Safety information

1. Read all instructions carefully before you begin this installation.
2. When installing battery, pay attention to the battery positive and negative polarity.
A long time without the remote control, remove the battery.
When remote distance becomes smaller and insensitive, replace the battery.
3. If no response from the receiver, please re-match the remote.
4. Gently handle remote, beware of falling.
5. For indoor and dry location use only.