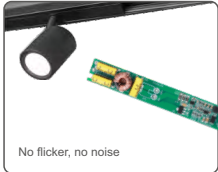


CXL-21A, CXL-28A

0/1-10V

0/1-10V Constant Current LED Driver

- Special for magnetic & linear lamp
- No input polarity
- DC to DC constant current output, multiple output current settings
- Dimming interface: 0-10V, 1-10V, 10V PWM, Resistor
- Suitable for STUCCHI standard housings, magnetic installation
- Smooth dimming without flicker, quiet without noise
- Short circuit, overload, no-load and anti-reverse protection
- 5-year warranty



Technical Parameters

Model		CXL-21A	CXL-28A
Output	Output Voltage	10~40VDC	
	Output Current	150-500mA	350-700mA
	Output Power	1.5W- 20W	3.5W- 28W
	Current Accuracy	±5%	
	Dimming Range	0~100%, dimming depth:0.1%	
	Channel num	1	
Input	Dimming mode	0/1-10V	
	Dimming Voltage Range	9.5-22.5V, typical 16V, interface current consumption: 1.8mA	
	Input Voltage	48VDC±1% ( No polarity)	
	Input Current	Max. 0.47A	Max. 0.65A
	Efficiency (Typ)	93%	95%
	Standby Power	<0.5W	
Environment	Woking Temperature	-20~50°C	
	Storage Temp	-40~80°C	
	Working Humidity	20~95%RH, non-condensing	
Protection	Overload	When load voltage exceed its range, the current declines, auto recovers when the load is reduced.	
	Short circuit protection	Output short-circuit, LED indicator flash fastly, intermittent shutdown LED output, a long time short-circuit, the system will completely shut down the LED output, need to be re-powered to activation	
	Open circuit protection	Output open circuit, LED indicator flash slowly, intermittent shutdown LED output, troubleshooting, LED back to normal lighting	
	Reverse connection	Prevent driver and load damage	
Other	Size	L125xW14xH10.8mm	
	Weight	11g±2g	

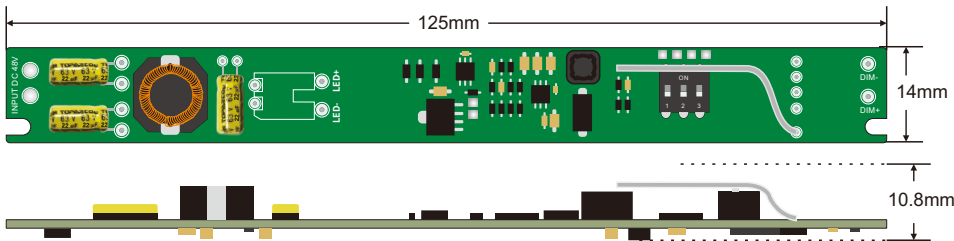
LED Current Selection

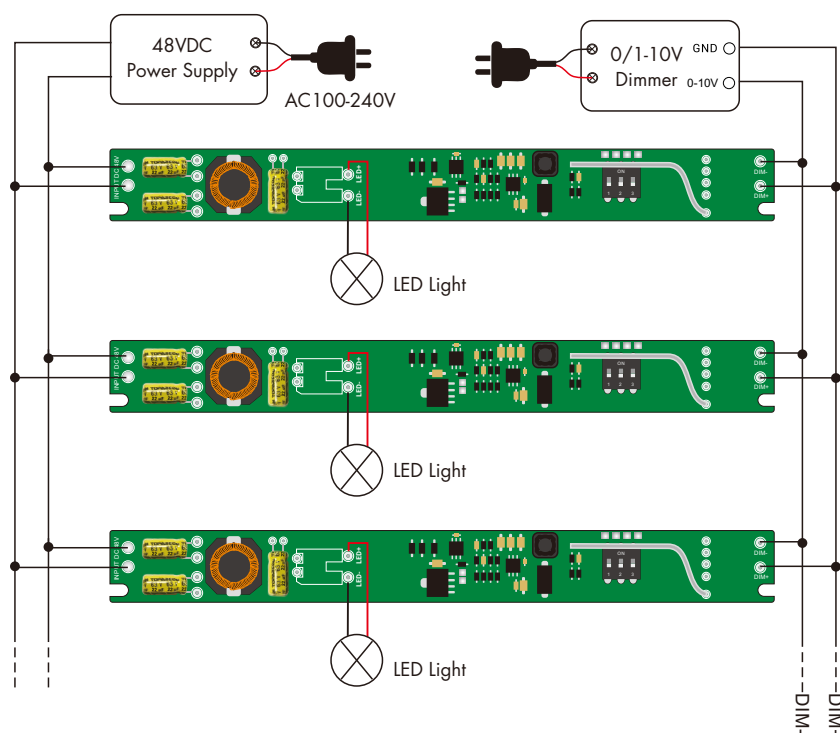
Note: Please select the correct current through the DIP switch on the PCB board when the power is off.



DIP Switch												
CXL-21A	Output Current	150mA	200mA	250mA	300mA	350mA	400mA	450mA	500mA			ON OFF
	Output Voltage	10-36V	10-36V	10-36V	10-36V	10-36V	10-36V	10-38V	10-40V			
	Output Power	1.5-5.4W	2-7.2W	2.5-9W	3-10.8W	3.5-12.6W	4-14.4W	4.5-17.1W	5-20W			
DIP Switch												
CXL-28A	Output Current	350mA	400mA	450mA	500mA	550mA	600mA	650mA	700mA			ON OFF
	Output Voltage	10-36V	10-36V	10-36V	10-36V	10-36V	10-38V	10-38V	10-40V			
	Output Power	3.5-12.6W	4-14.4W	4.5-16.2W	5-18W	5.5-19.8W	6-22.8W	6.5-24.7W	7-28W			

Mechanical Structures and Installations





## 0/1-10V Connection

- The 0/1-10V input is operable via commercially available simple rotary wall switches designed for 0/1-10V dimming equipment or from dedicated system central dimming controllers.
- Compatible with 0-10V, 1-10V, PWM (1KHz, 10V), RX(adjustable resistor 300K-500K), 4-in-1 dimming signal input.
- In order to ensure dimming consistency, when the connected 0/1-10V dimmer output signal current is 20mA, the number of LED driver connections does not exceed 50 pcs, when the 0/1-10V dimmer output signal current is 50mA, the number of LED driver connections does not exceed 100 pcs. The maximum length of the wires from dimmer to LED driver should be no more than 50 meters(use copper wire with a cross-sectional area of 0.75 mm<sup>2</sup> for wiring).

## Dimming Curve

