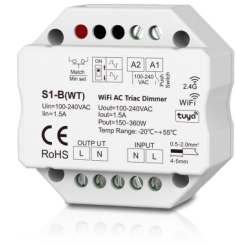
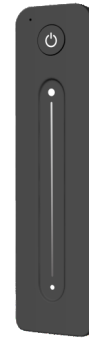


S1-B(WT) + R11



WiFi & RF Triac Dimmer Kit

- WiFi + RF + Push AC phase-cut dimmer, 1 channel output.
- To dim and switch single color dimmable LED lamps, traditional incandescent and halogen lights.
- Tuya smart APP cloud control, support on/off, brightness adjust, delay turn on/off light, timer run, scene function.
- Touch the remote control slider to adjust the brightness.
- Leading edge dimming or trailing edge dimming set by dip switch.
- Min brightness can be set by key.
- Light on/off fade time 3s selectable.
- Connect with external push switch to achieve on/off and dimming function.
- Easy to be inserted into standard 86*86mm wall box.



FC CE RoHS

Technical Parameters

Triac Dimmer's Input and Output		RF Remote's Input and Output		Safety and EMC	
Input voltage	AC100-240V	Output signal	RF 2.4GHz	EMC standard	EN IEC 55015/EN IEC 61547 ETSI EN 301 489-1/-3
Output voltage	AC100-240V	Working voltage	3VDC(CR2032)	Safety standard	EN 61347-1/-2 EN 62493
Output current	Max 1.5A	Working current	<5mA	Radio Equipment	ETSI EN 300 440
Output power	150-360W	Standby current	<10μA	Certification	CE RoHS FCC
Dimming signal	WiFi + RF + Push Dim	Standby time	1 years	Environment	
Dimming level	256 levels	Remote distance	30m(Barrier-free space)		
Dimming range	0-100%			Operation temperature	Ta: -20 °C ~ +55 °C

Compatible Load Types

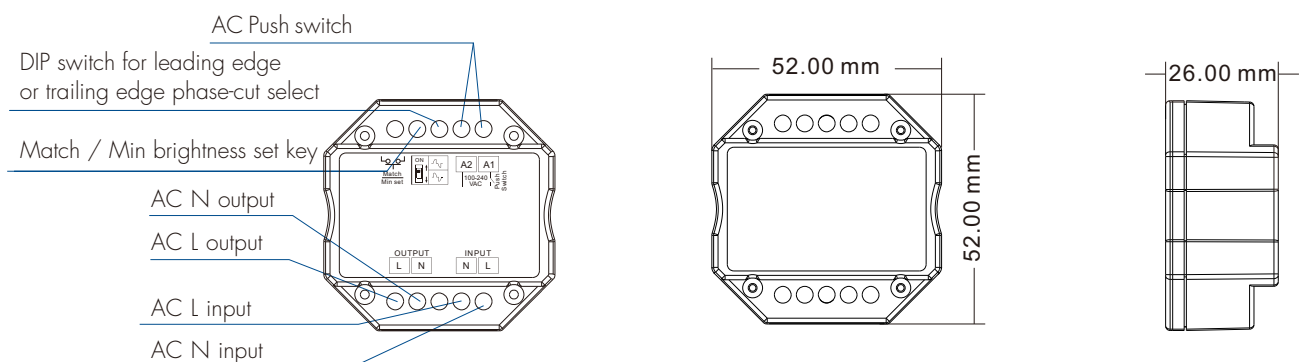
Load type	Maximum load	Remarks
Dimmable LED lamps	200W @ 220V 100W @ 110V	Due to variety of LED lamp designs, maximum number of LED lamps is further dependent on power factor result when connected to dimmer.
Triac dimmable LED drivers	200W @ 220V 100W @ 110V	Maximum permitted number of drivers is 200W divided by driver rated input power, and make sure the surge current is no more than 2 times 65A.
Incandescent lighting, HV halogen lamps	400W @ 220V 200W @ 110V	

Recommended number of load connection

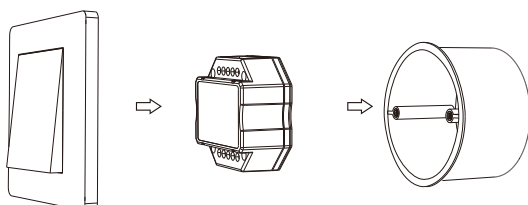
Load type	Output power per load	Quantity
Dimmable downlight	5.5W @ 220V~240V	20
Triac dimmable LED driver	12W @ 200V~240V	15
Triac dimmable LED driver	36W @ 200V~240V	4
Triac dimmable LED driver	75W @ 200V~240V	2

Because different manufacturers triac dimmable LED driver rated input power is different, you can refer to the formula to calculate the max. number of LED driver. Formula: $D_{max} = 200W/RP$, at the same time need to meet the sum of the surge current (I_{surge}) does not exceed 130A.
For example: triac dimmable LED driver rated input power(RP) = 15.4W, surge current = 10A/230VAC, Then $D_{max} = 200/15.4 = 13$ (pcs), $I_{surge} = 13 * 10 = 130A$, the max. number of triac dimmable LED driver is 13.

Mechanical Structures and Installations



Typical Wall Junction Box Mounting



Remote Function

LED indicator

On/Off

100%

Bright touch slide

50%

1%

36.00 mm

11.00 mm

139.00 mm

40.00 mm

53.50 mm

CR2032 Battery

Note:

1. Before the first use, please remove the protective film on the battery.

2. If the LED indicator is not on when press key, it is due to dead battery or bad contact caused by multiple plugging, please replace the battery, or raise the battery shrapnel with a screw driver.

Back holder with magnet

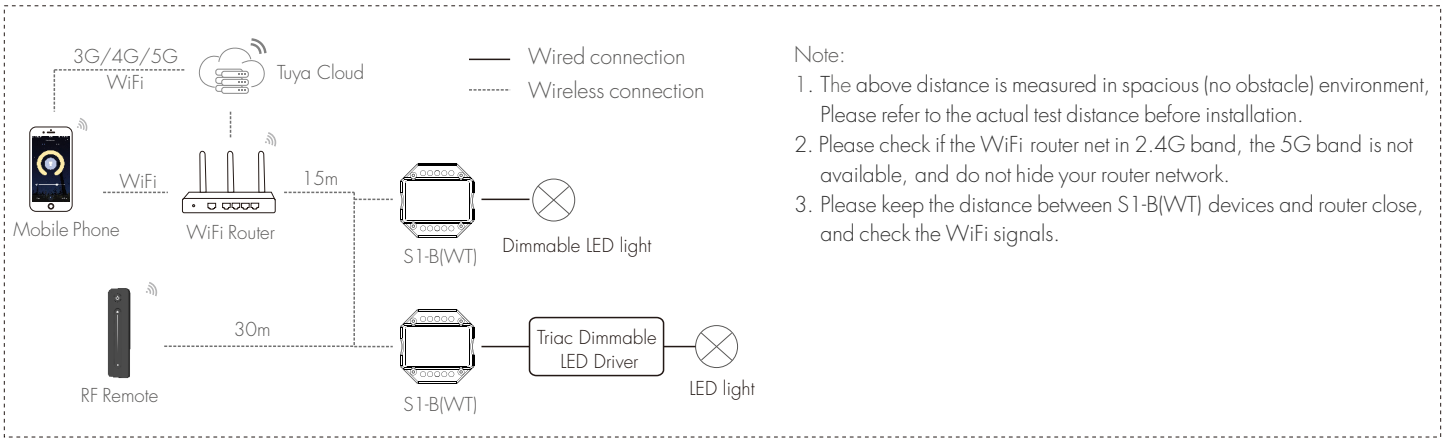
To fix the remote, three options are offered for selection:

Option 1. Can be adsorbed directly onto metal surfaces.

Option 2. Fix the remote' back holder on the wall with two screws.

Option 3. Adhere the remote' back holder to the wall with pastar.

System Wiring



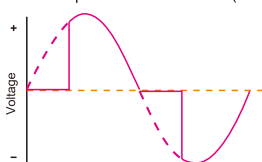
Leading Edge or Trailing Edge Dimming Setting

Select leading edge(forward-phase) dimmer or trailing edge(reverse-phase) dimmer according to dimmable LED light or driver.

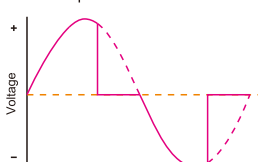


Reverse-phase
Forward-phase

Forward-phase control dimmer(TRIAC)



Reverse-phase control dimmer



Caution: before power on, you must confirm the selection of dip switch.

Min Brightness Setting

Long press Min set key for 10s, the light blink 2 times, ready for min brightness set, then short press Min set key 1-6 times, to get 6 min brightness: 5%, 10%, 15%, 20%, 25% or 30%, the light will output the current min brightness immediately, wait 8s, quit min brightness set automatically, the light will return output 100% brightness.

Tuya Smart APP Network Connection and Operation

Press and hold Match/Set key for 5s, or push twice Match/Set key fastly,
Clear previous network connection, enter WiFi config mode, the blue LED indicator flash fastly.

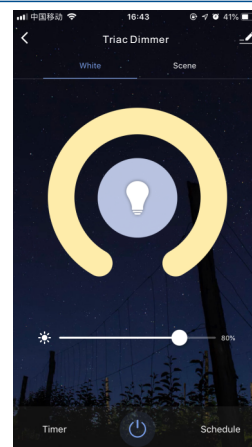
Repeat power off and on for 5 consecutive times fastly, also clear previous network connection,
enter WiFi config mode, the output LED will flash 10 times.

If Tuya smart APP network connection succeed, the blue LED indicator will stop flash,
and in Tuya smart APP, you can find Triac dimmer device.

When controlling the light with Tuya Smart/Smart Life APP, if the network connection is poor,
you can control the light with Bluetooth connection within the Bluetooth control range.

Note: The light can not be directly controlled by Bluetooth without WiFi configuration.

Tuya smart APP interface operation:
Touch brightness slide to adjust brightness.



Match RF Remote Control

End user can choose the suitable match/delete ways. Two options are offered for selection:

Use S1-B(WT)'s Match key

Match:

Short press match key of S1-B(WT),
immediately press on/off key on the remote.

Delete:

Press and hold match key for S1-B(WT) for 5s to delete all match,
The light blinks 5 times means all matched remotes were deleted.

Use Power Restart

Match:

Switch off the power of S1-B(WT), then switch on power, repeat again,
Immediately short press on/off key 3 times on the remote.
The light blinks 3 times means match is successful.

Delete:

Switch off the power of S1-B(WT), then switch on power, repeat again,
Immediately short press on/off key 5 times on the remote.
The light blinks 5 times means all matched remotes were deleted.

AC Push Dim

- Short press:
Turn on or off light.
- Long press (1-6s):
Press and hold to step-less dimming. With every other long press, the light level goes to the opposite direction.
- Dimming memory:
Light returns to the previous dimming level when switched off and on again, even at power failure.

Safety Information

1. Read all instructions carefully before you begin this installation.
2. When installing battery, pay attention to the battery positive and negative polarity.
A long time without the remote control, remove the battery.
When remote distance becomes smaller and insensitive, replace the battery.
3. Remove and immediately recycle or dispose of used batteries according to local regulations and keep away from children.
Do not dispose of batteries in household trash or incinerate.
4. Do not force discharge, recharge, disassemble, or heat the battery.
5. Stop using the product if the battery compartment is not securely closed.
6. If swallowing occurs seek medical attention immediately.
7. Gently handle remote, beware of falling.
8. For indoor and dry location use only.

FCC ID Statement:

Mobile

RF Exposure Information

This equipment complies with FCC radiation exposure limits set forth for an uncontrolled environment.

This equipment should be installed and operated with minimum distance 20cm between the radiator and your body.

IC ID Statement:

Mobile

This equipment should be installed and operated with minimum distance 20cm between the radiator & your body.

Cet équipement doit être installé et utilisé à une distance minimale de 20 cm entre le radiateur et votre corps.