

T21-S, T22-S, T24-S, T25-S

Touch Panel RF Remote Control

Touch Panel Remote



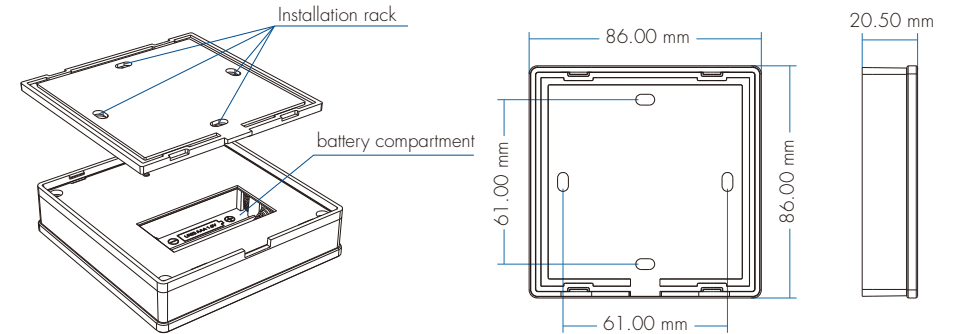
CE RoHS

- Ultra sensitive high strength glass RF touch panel remote with 1-5 color control.
- Each touch panel can remotely control one or more RF 2.4G LED controllers.
- Multi-touch slider to adjust light brightness or color.
- Multi-scene or multi-zone control can be set.
- Touch keys with LED indicator.
- Easy to install, no wiring required, and can be moved anywhere.
- AAAx2 battery powered.
- White & Black glass panel available.

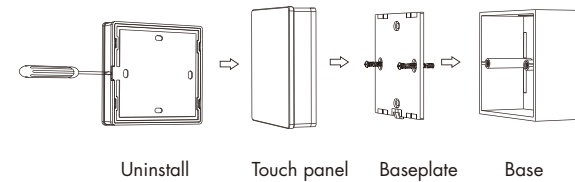
Technical Parameters

Input and Output		Environment		Safety and EMC	
Output signal	RF(2.4GHz)	Operation temperature	Ta: -30℃ ~ +55℃	EMC standard	EN IEC 55015/ EN IEC 61547 ETSI EN 301 489-1/-3
Work voltage	3VDC(AAA*2)	Case temperature (Max.)	Tc: +65℃	Safety standard	EN 61347-1/-2 EN 62493
Work current	<3mA	IP rating	IP20		
Standby current	15μA	Package		Radio equipment	ETSI EN 300 440
Standby time	1 year	Size	L108 x W108 x H32mm	Certification	CE RoHS
Remote distance	30m (Barrier-free space)	Gross weight	0.164kg	Warranty	5 years

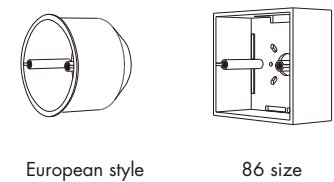
Mechanical Structures and Installations



Installation diagram:



Typical base as below:



To fix the panel, two options are offered for selection:

- Option 1: fix it on the wall with two screws.
Option 2: adhere it to the wall with pastar.

Match Remote Control (two match ways)

End user can choose the suitable match/delete ways. Two options are offered for selection:

Use the controller's Match key

Match:
Short press match key,
immediately press on/off key of the touch panel.
The LED indicator fast flash a few times means
match is successful.

Delete:
Press and hold match key for 5s to delete all match.
The LED indicator fast flash a few times means
all matched remotes were deleted.

Use Power Restart

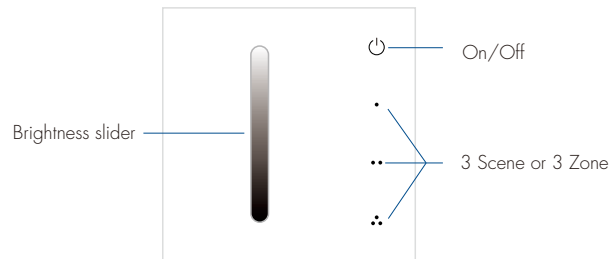
Match:
Switch off the power of the receiver, then switch on power,
repeat again.
Immediately short press on/off key 3 times on the touch panel.
The output light blinks 3 times means match is successful.

Delete:
Switch off the power of the receiver, then switch on power,
repeat again.
Immediately short press on/off key 5 times on the touch panel.
The light blinks 5 times means all matched remotes were deleted.

Note:
When set as a multi-zone remote control, you need to use the zone keys of the touch panel for matching or deleting.

Key Function

● T21-S Single color panel

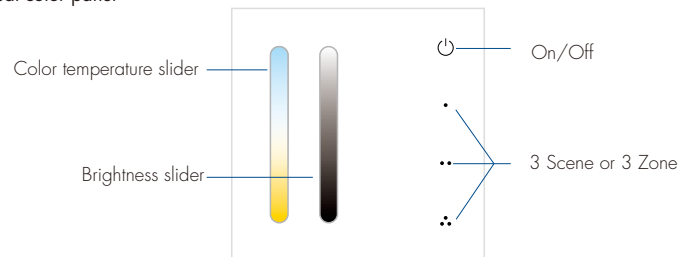


T21-S can be set as single zone 3-scene remote control (factory default) or a 3-zone remote control:

Long press and key at the same time for 5s to set it as single-zone 3-scene remote control, the red indicator blinks 3 times.

Long press and key at the same time for 5s to set it as 3-zone remote control, the blue indicator blinks 3 times.

● T22-S Dual color panel

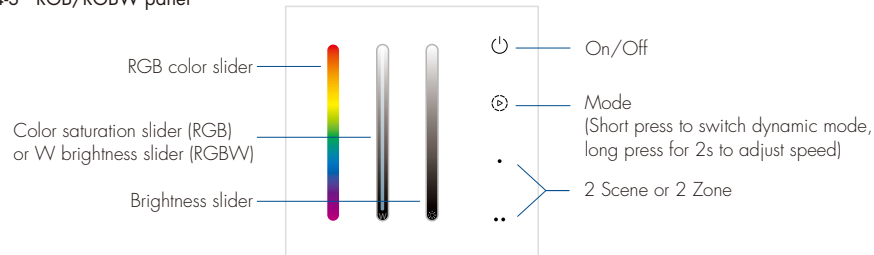


T22-S can be set as single zone 3-scene remote control (factory default) or a 3-zone remote control:

Long press and key at the same time for 5s to set it as single-zone 3-scene remote control, the red indicator blinks 3 times.

Long press and key at the same time for 5s to set it as 3-zone remote control, the blue indicator blinks 3 times.

● T24-S RGB/RGBW panel



T24-S can be set as single zone 2-scene remote control (factory default) or 2-zone remote control:

Long press and key at the same time for 5s to set it as single-zone 2-scene remote control, the red indicator blinks 3 times.

Long press and key at the same time for 5s to set it as 2-zone remote control, the blue indicator blinks 3 times.

T24-S can be set as RGB, RGB+W or RGBW remote control.

Long press and key at the same time for 5s, the blue indicator blinks continuously for 5s.

Enter the state of setting RGB/RGB+W/RGBW light types and perform the following operations within 5s:

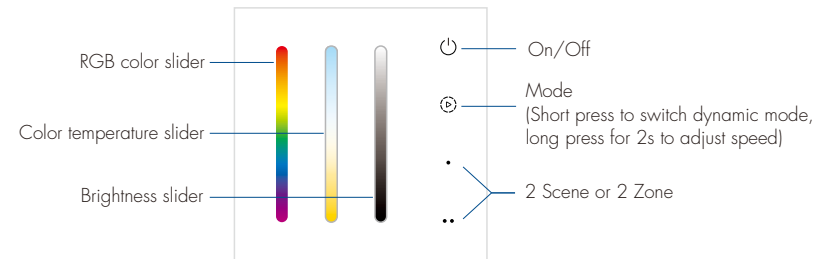
Touch once , set as RGB light type.

Touch once , set as RGB+W light type, RGB color light and W light can be turned on at the same time.

Touch once , set as RGBW light type, RGB color light and W light can't be turned on at the same time.

The factory default is RGBW light type.

● T25-S RGB+CCT panel



T25-S can be set as single zone 2-scene remote control (factory default) or 2-zone remote control:

Long press and key at the same time for 5s to set it as single-zone 2-scene remote control, the red indicator blinks 3 times.

Long press and key at the same time for 5s to set it as 2-zone remote control, the blue indicator blinks 3 times.

Scene and zone key functions:

When key is set to scene function:

Short press to call up the scene;

Long press for 5s to save the current light state to the scene.

When the save is successful, the blue LED indicator flash 1 time.

When key is set to zone function:

Short press to turn on the zone light and select this zone.

Quickly short press the zone key to select multiple zones at the same time.

Long press for 2s to turn off the zone light.

Scene Lock:

- The scene keys can be set to locked status, i.e. cancelling the long press for 5s to save the scene function (the default scene is not locked).
- Short press the panel on/off key, turn on the light first, then turn off the light, immediately long press the panel on/off key for 5s, and then immediately long press any one scene key for 5s to set all scene keys to lock status, the blue LED indicator blinks 2 times.
- Short press the panel on/off key, turn on the light first, then turn off the light, immediately long press the panel on/off key for 5s, then immediately long press any one scene key for 10s to set all scene keys to unlocked state, the blue LED indicator blinks 4 times.

Safety Information

1. Read all instructions carefully before you begin this installation.
2. When installing battery, pay attention to the battery positive and negative polarity.
A long time without the remote control, remove the battery.
When remote distance becomes smaller and insensitive, replace the battery.
3. If no response from the receiver, please re-match the remote.
4. Gently handle remote, beware of falling.
5. For indoor and dry location use only.