

TL1, TL2, TL4, TL5

Touch Panel RF Remote Control

Touch Panel Remote



Features

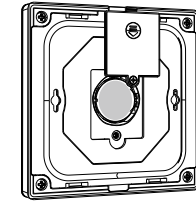
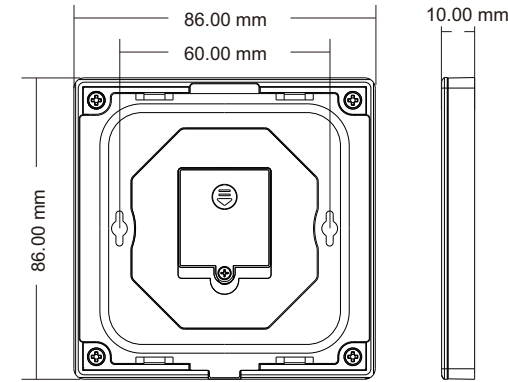
- Ultra sensitive high strength glass RF touch panel remote with 1-5 color control.
- Each touch panel can remotely control one or more RF 2.4G LED controllers.
- Multi-touch slider to adjust light brightness or color.
- 4-scene or 4-zone control can be set.
- Touch keys with LED indicator.
- Easy to install, no wiring required, and can be moved anywhere.
- CR2032 battery powered.
- White & Black glass panel available.

Technical Parameters

Input and Output		Environment		Safety and EMC	
Output signal	RF(2.4GHz)	Operation temperature	Ta: -30°C ~ +55°C	EMC standard	EN IEC 55015/ EN IEC 61547 ETSI EN 301 489-1/-3
Work voltage	3VDC(CR2032)	Case temperature (Max.)	Tc: +65°C	Safety standard	EN 61347-1/-2 EN 62493
Work current	<4mA	IP rating	IP20	Radio equipment	ETSI EN 300 440
Standby current	<1.5µA	Package		Certification	CE RoHS
Standby time	1 year	Size	L100 x W92 x H16.5mm	Warranty	5 years
Remote distance	30m (Barrier-free space)	Gross weight	0.142kg		

CE RoHS

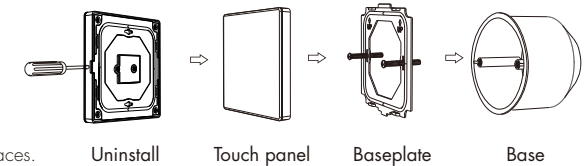
Mechanical Structures and Installations



Note:

1. Before the first use, please remove the protective film on the battery.
2. Open the battery cover with a screwdriver.
3. If the LED indicator is not on when press key, it is due to dead battery or bad contact caused by multiple plugging, please replace the battery, or raise the battery shrapnel with a screwdriver.

Installation diagram:



To fix the panel, three options are offered for selection:

- Option 1. fix it on the wall with two screws.
- Option 2. adhere it to the wall with paster.
- Option 3. panel can be adsorbed directly onto metal surfaces.

Match Remote Control (two match ways)

End user can choose the suitable match/delete ways. Two options are offered for selection:

Use the controller's Match key

Match:
Short press match key, immediately press on/off key of the touch panel. The LED indicator fast flash a few times means match is successful.

Delete:
Press and hold match key for 5s to delete all match. The LED indicator fast flash a few times means all matched remotes were deleted.

Use Power Restart

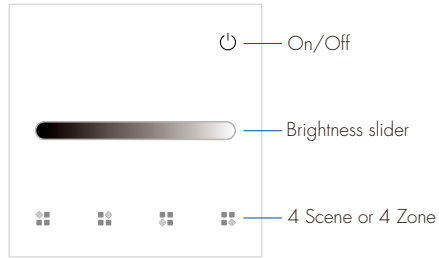
Match:
Switch off the power of the receiver, then switch on power, repeat again. Immediately short press on/off key 3 times on the touch panel. The output light blinks 3 times means match is successful.

Delete:
Switch off the power of the receiver, then switch on power, repeat again. Immediately short press on/off key 5 times on the touch panel. The light blinks 5 times means all matched remotes were deleted.

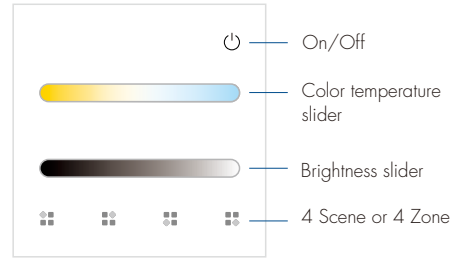
Note:
When set as a multi-zone remote control, you need to use the zone keys of the touch panel for matching or deleting.

Key function

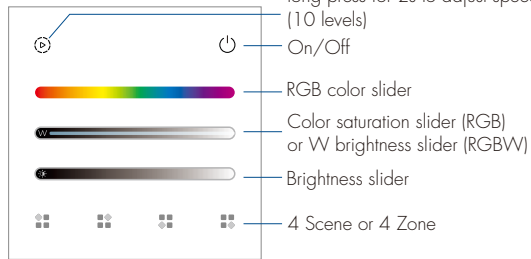
• TL1 Single color panel



• TL2 Dual color panel



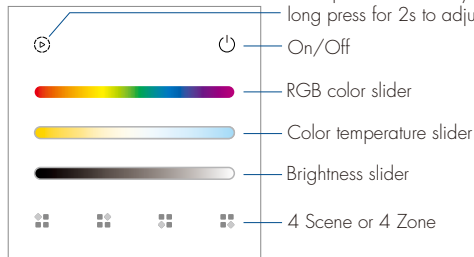
• TL4 RGB/RGBW panel



Short press to switch dynamic mode, long press for 2s to adjust speed (10 levels)

TL4 can be set as RGB, RGB+W or RGBW remote control: Long press and key at the same time for 5s, the red indicator blinks continuously for 5s, enter the state of setting RGB/RGB+W/RGBW light type and perform the following operations within 5s: Touch once , set as RGB light type. Touch once , set as RGB+W light type, RGB color light and W light can be turned on at the same time. Touch once , set as RGBW light type, RGB color light and W light can't be turned on at the same time. The factory default is RGBW light type.

• TL5 RGB+CCT panel



Short press to switch dynamic mode, long press for 2s to adjust speed (10 levels)

4 scene or 4 zone set-up:

TL1/TL2/TL4/TL5 can be set as single zone 4-scene remote control (factory default) or 4-zone remote control:

Long press and key at the same time for 5s to set it as single-zone 4-scene remote control, the red indicator blinks 3 times.

Long press and key at the same time for 5s to set it as 4-zone remote control, the red indicator blinks 3 times.

Scene and zone key functions:

When key is set to scene function:

Short press to call up the scene;

Long press for 5s to save the current state to the scene.

When the save is successful, the red LED indicator flash 1 time.

When key is set to zone function:

Short press to turn on the zone light and select this zone.

Quickly short press the zone key to select multiple zones at the same time.

Long press for 2s to turn off the zone lights.

Scene Lock:

- The scene keys can be set to locked status, i.e. cancelling the long press for 5s to save the scene function (the default scene is not locked).
- Short press the panel on/off key, turn on the light first, then turn off the light, immediately long press the panel on/off key for 5s, and then immediately long press any one scene key for 5s to set all scene keys to lock status.
- Short press the panel on/off key, turn on the light first, then turn off the light, immediately long press the panel on/off key for 5s, then immediately long press any one scene key for 10s to set all scene keys to unlocked state.

Safety Information

1. Read all instructions carefully before you begin this installation.
2. When installing battery, pay attention to the battery positive and negative polarity. A long time without the remote control, remove the battery. When remote distance becomes smaller and insensitive, replace the battery.
3. If no response from the receiver, please re-match the remote.
4. Gently handle remote, beware of falling.
5. For indoor and dry location use only.
6. Remove and immediately recycle or dispose of used batteries according to local regulations and keep away from children. Do NOT dispose of batteries in household trash or incinerate.
7. Even used batteries may cause severe injury or death.
8. Call a local poison control center for treatment information.
9. Compatible battery type is CR2032 and the nominal battery voltage is 3V.
10. Non-rechargeable batteries are not to be recharged.
11. Do not force discharge, recharge, disassemble, heat above 55°C or incinerate. Doing so may result in injury due to venting, leakage or explosion resulting in chemical burns.
12. Ensure the batteries are installed correctly according to polarity (+ and -).
13. Do not mix old and new batteries, different brands or types of batteries, such as alkaline, carbon-zinc, or rechargeable batteries.
14. Remove and immediately recycle or dispose of batteries from equipment not used for an extended period of time according to local regulations.
15. Always completely secure the battery compartment. If the battery compartment does not close securely, stop using the product, remove the batteries, and keep them away from children.

⚠ WARNING

• **INGESTION HAZARD:** This product contains a button cell or coin battery.

• **DEATH** or serious injury can occur if ingested.

• A swallowed button cell or coin battery can cause **Internal Chemical Burns** in as little as **2 hours**.

• **Keep** new and used batteries **OUT OF REACH of CHILDREN**

• **Seek immediate medical attention** if a battery is suspected to be swallowed or inserted inside any part of the body.

