

V4-PD

One-Button RF RGBW LED Controller

- Use to control the RGBW LED strip.
- One button for on/off, RGB color and white light brightness adjustment.
- 4096 levels dimming smoothly without any flash.
- Operate with LED indicator light.
- Built in 10 dynamic mode, include jump or gradual change style.
- Match with RF 2.4G single zone or multiple zone RGBW remote control.
- Used as RF remote control to output RF 2.4G signal, remote control of other RF RGBW controllers or RF dimming drivers.

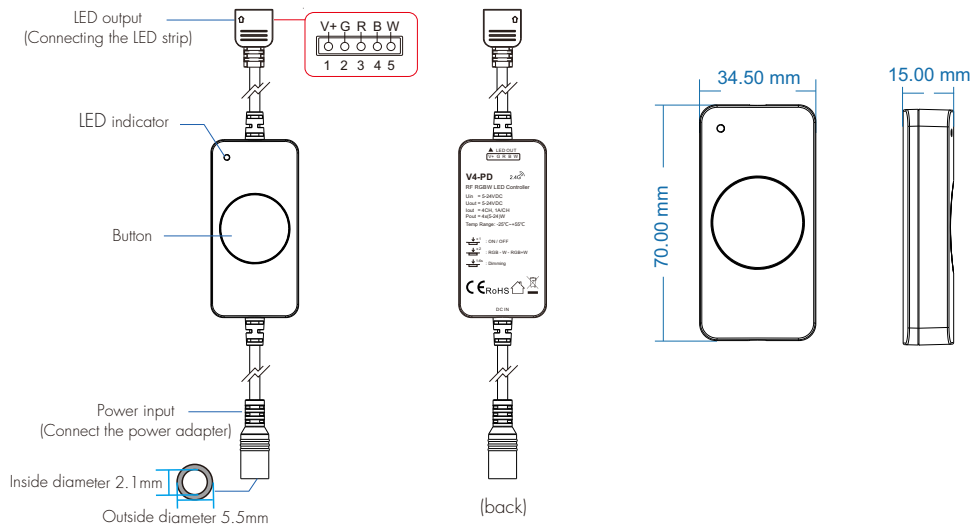


CE RoHS

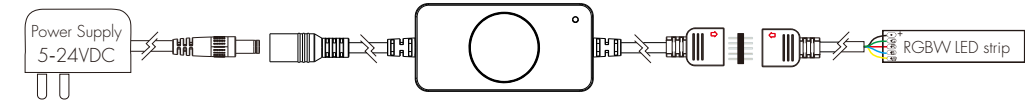
Technical Parameters

Input and Output		Dimming data		Safety and EMC	
Input voltage	5-24VDC	Input signal	One button + RF 2.4GHz	EMC standard	EN IEC 55015 EN IEC 61547 ETSI EN 301 489-1/-3
Output voltage	5-24VDC	Control distance	30m(Barrier-free space)	Safety standard	EN 61347-1/-2
Output current	4CH, 1A/CH	Dimming gray scale	4096 levels	Radio equipment	ETSI EN 300 440
Output power	4x(5-24)W	Dimming range	1-100%	Certification	CE RoHS
PWM Frequency	2000Hz	Environment			
Dimming curve	Logarithmic				
Warranty and Protection		Package			
Warranty	5 years	Operation temperature	Ta: -25℃ ~ +55℃		
Protection	Reverse polarity, Over-heat	Case temperature (Max.)	Tc: +85℃		
		IP rating	IP20	Size	110x57x28mm(LxVxH)
				Gross weight	0.048kg

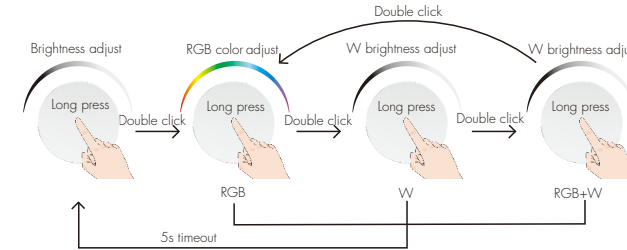
Mechanical Structures and Installations



Wiring Diagram



Button Function



Short press: Turn on or off light.

Double click: Switch the three working modes of color (RGB), white light (W), color + white light (RGB+W, RGB and white light are on at the same time).

At the same time and the state of long press to adjust the color (RGB)

or adjust the brightness of white light state (WV and RGB + WV mode).

After 5s of no operation, it will automatically return to the state of long press to adjust brightness.

Long press(1-6s): Adjust the brightness, color or white brightness, long press again after each release, adjust in the opposite direction. Adjust the brightness by default.

V4-PD Match RF Remote Controller (Use Power Restart)

Match:

Switch off the power, then switch on power, repeat again.

Immediately short press on/off key (single zone remote)

or zone key (multiple zone remote) 3 times on the remote.

The light blinks 3 times means match is successful.

Delete:

Switch off the power, then switch on power, repeat again.

Immediately short press on/off key (single zone remote)

or zone key (multiple zone remote) 5 times on the remote.

The light blinks 5 times means all matched remotes were deleted.

V4-PD Used As RF Remote Controller

The V4-PD can be matched with one or more RF RGBW LED controllers/RF dimming drivers

to remotely control other fixtures via one-button operation.

For example, two V4-PD controllers match with each other for synchronized control.

End user can choose the suitable match/delete ways.

Use the controller's Match key

Match:

Short press the controller/power supply's match key,

immediately press the button.

The LED indicator fast flash a few times means

match is successful.

Delete:

Press and hold the controller/power supply's match key 5s,

The LED indicator fast flash a few times means all matched

remotes were deleted.

Use Power Restart

Match:

Switch off the power of the controller, then switch on power,

repeat again.

Immediately short press the button 3 times.

The light blinks 3 times means match is successful.

Delete:

Switch off the power of the controller, then switch on power,

repeat again.

Immediately short press the button 5 times.

The light blinks 5 times means all matched remotes were deleted.

Dynamic Mode List (RF remote control call-out only)

No.	Name	No.	Name
1	RGB jump	6	RGB fade in and out
2	RGB smooth	7	Red fade in and out
3	6 color jump	8	Green fade in and out
4	6 color smooth	9	Blue fade in and out
5	Yellow cyan purple smooth	10	White fade in and out

Dimming Curve

