

# RGBW/RGB/CCT/Dimming 4 Channel LED RF Controller

Model No.: V4-X

4 Channels/Stepless dimming/Wireless remote control/Auto-transmitting/Synchronize/Multiple protection

## Features

- 4 channel PWM constant voltage output, Max 8A per channel.
- Match with RF 2.4G single zone or multiple zone single color, dual color and RGB/RGBW remote control.
- One RF controller accept up to 10 remote control.
- 4096 levels 0-100% dimming smoothly without any flash.
- When using with RGB/RGBW light, built in 10 dynamic mode, include jump or gradual change style.
- Auto-transmitting function: Controller automatically transmit signal to another controller with 15m control distance.
- Synchronize on multiple number of controllers.
- Fade in and out effect selectable.
- Over-load / Short circuit protection, recover automatically.

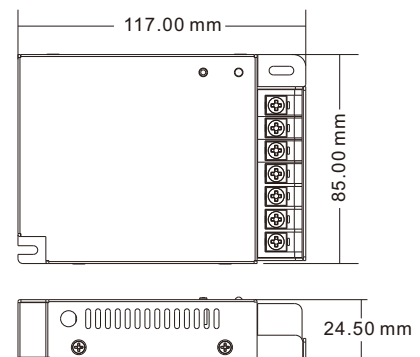
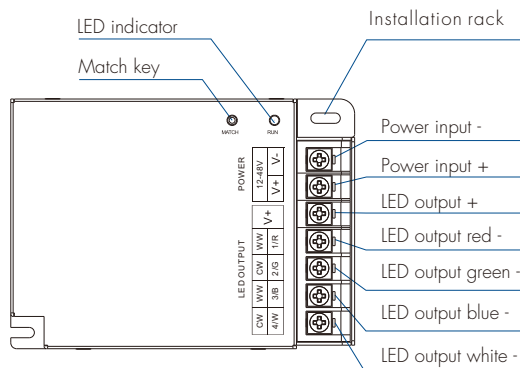


FC CE RoHS EMC LVD RED

## Technical Parameters

Input and Output		Dimming data		Safety and EMC	
Input voltage	12-48VDC	Input signal	RF 2.4GHz	EMC standard (EMC)	ETSI EN 301 489-1 V2.2.3 ETSI EN 301 489-17 V3.2.4
Input current	32.5A@12/24V 20.5A@36/48V	Control distance	15m(Barrier-free space)	Safety standard(LVD)	EN 62368-1:2020+A11:2020
Output voltage	4 x (12-48)VDC	Dimming gray scale	4096 (2 <sup>12</sup> ) levels	Radio Equipment(RED)	ETSI EN 300 328 V2.2.2
Output current	4x8A@12/24V 4x5A@36/48V	Dimming range	0 -100%	Certification	CE,EMC,IVD,RED
Output power	4x96W@12V 4x192W@24V 4x180W@36V 4x240W@48V	Dimming curve	Logarithmic	Warranty	5 years
Output type	Constant voltage	PWM Frequency	1000Hz (default)	Environment	
		Package		Operation temperature	Ta: -30 °C ~ +55 °C
		Size	L120x W90 x H30mm	Case temperature (Max.)	Tc: +85 °C
		Gross weight	0.304kg		

## Mechanical Structures and Installations



## Match Remote Control (two match ways)

End user can choose the suitable match/delete ways. Two options are offered for selection:

### Use the controller's Match key

**Match:**  
Short press match key, immediately press on/off key (single zone remote) or zone key (multiple zone remote) on the remote. The LED indicator fast flash a few times means match is successful.

**Delete:**  
Press and hold match key for 5s to delete all match, The LED indicator fast flash a few times means all matched remotes were deleted.

### Use Power Restart

**Match:**  
Switch off the power, then switch on power, repeat again. Immediately short press on/off key (single zone remote) or zone key (multiple zone remote) 3 times on the remote. The light blinks 3 times means match is successful.

**Delete:**  
Switch off the power, then switch on power, repeat again. Immediately short press on/off key (single zone remote) or zone key (multiple zone remote) 5 times on the remote. The light blinks 5 times means all matched remotes were deleted.

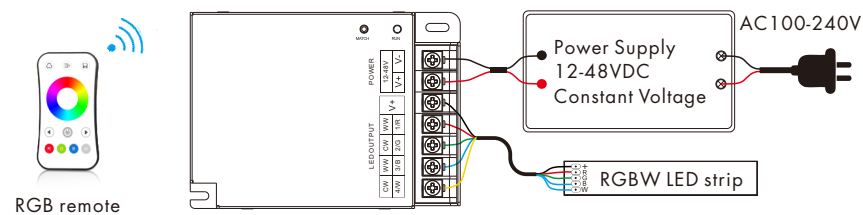
## Light on/off fade time

Long press match key 5s, then short press match key 3 times, the light on/off time will be set to 3s, the indicator light blink 3 times.

Long press match key 10s, restore factory default parameter, the light on/off time also restore to 0.5s.

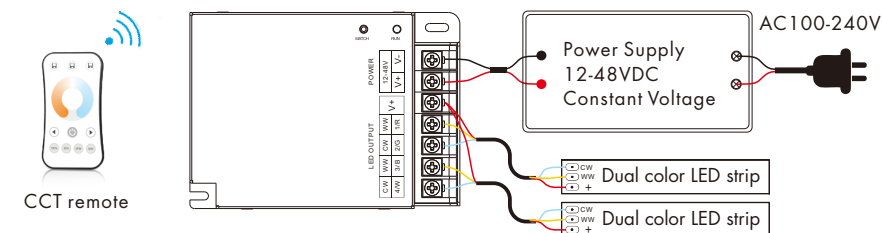
## Wiring Diagram

### • V4-X for RGB/RGBW

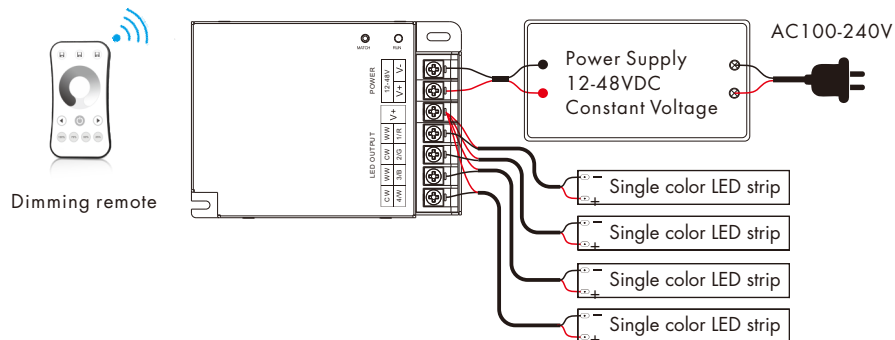


Note: If connect with RGB LED strip, please long press match key for 1.5s, the controller will become RGB type.

### • V4-X for dual color



### • V4-X for single color



## RGB/RGBW Dynamic mode list

No.	Name	No.	Name
1	RGB jump	6	RGB fade in and out
2	RGB smooth	7	Red fade in and out
3	6 color jump	8	Green fade in and out
4	6 color smooth	9	Blue fade in and out
5	Yellow cyan purple smooth	10	White fade in and out

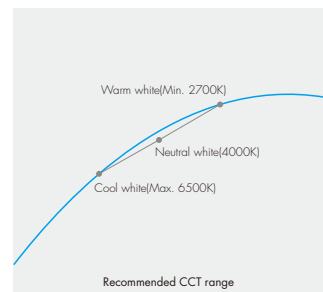
## Dual color control

CH1,CH3=Warm white LED CH2,CH4=Cool white LED

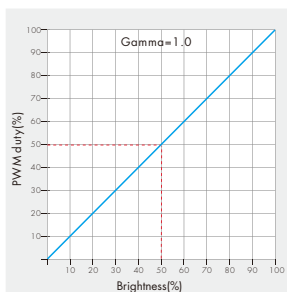
Each channel can supply up to 192W(@24V) and white balance can be controlled as such:

Color temperature	Cool white	Neutral white	Warm white
Power distribution	CH1=0W,CH2=192W CH3=0W,CH4=192W	CH1=96W,CH2=96W CH3=96W,CH4=96W	CH1=192W,CH2=0W CH3=192W,CH4=0W

### Linear dual color tuning



### Dimming curve for CCT



### Dimming curve for RGBW/RGB/DIM

