

One-Button RF RGB+CCT LED Controller

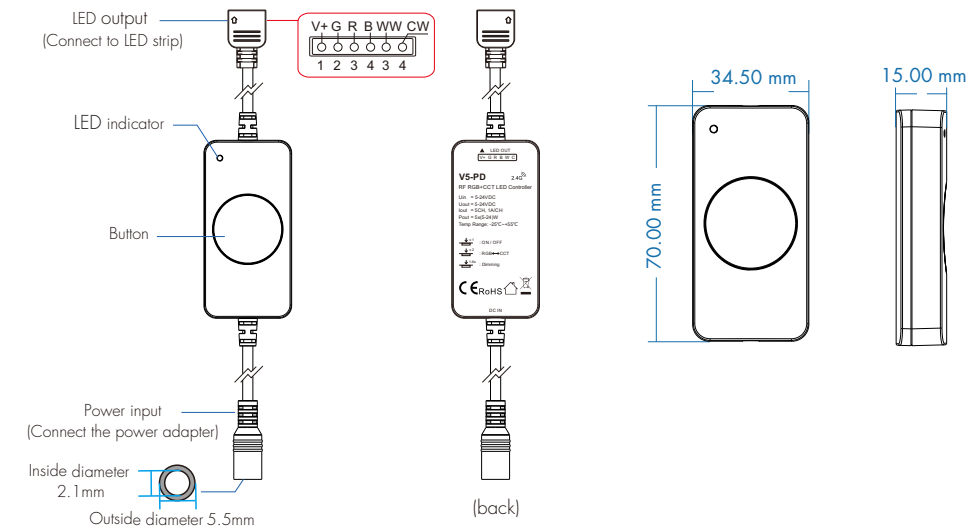
- Used to control the RGB+CCT LED strip.
- One button for on/off, RGB color, color temperature and brightness adjustment.
- 4096 levels dimming smoothly without any flash.
- Operate with LED indicator light.
- Built in 10 dynamic mode, include jump or gradual change style.
- Match with RF 2.4G single zone or multiple RGB+CCT remote control.
- Used as RF remote control to output RF 2.4G signal, remote control of other RF RGB+CCT controllers or RF dimming drivers.



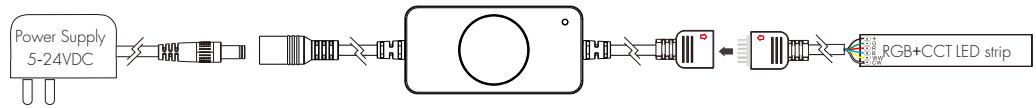
Technical Parameters

Input and Output		Dimming data		Safety and EMC	
Input voltage	5-24VDC	Input signal	One-button + RF 2.4GHz	EMC standard	EN IEC 55015
Output voltage	5-24VDC	Control distance	30m[Barrier-free space]		EN IEC 61547
Output current	5CH, 1A/CH			ETSI EN 301 489-1/-3	
Output power	5x(5-24)W	Dimming gray scale	4096 levels	Safety standard	EN 61347-1/-2
PWM frequency	2000Hz	Dimming range	1 - 100%	Radio equipment	ETSI EN 300 440
Dimming curve	Logarithmic			Certication	CE RoHS
Warranty and Protection		Environment			
Warranty	5 years	Operation temperature	Ta: -25℃ ~ +55℃	Package	
Protection	Reverse polarity, Overheat	Case temperature [Max.]	Tc: +85℃	Size	110x57x28mm[LxWxH]
		IP rating	IP20	Gross weight	0.048kg

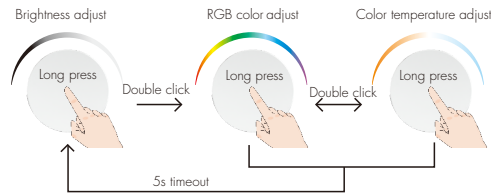
Mechanical Structures and Installations



Wiring Diagram



Button Function



Short press: Turn on or off light.

Double click: Switch the color light (RGB) and color temperature, and at the same time enter the state of long press to adjust color or adjust color temperature. After 5s of no operation, it will automatically return to the state of long press to adjust brightness.

Long press(1-6s): Adjust the brightness, color or color temperature, long press again after each release, adjust in the opposite direction. Adjust the brightness by default.

V5-PD Match RF Remote Controller (Use Power Restart)

Match: Switch off the power, then switch on power, repeat again. Immediately short press on/off key (single zone remote) or zone key (multiple zone remote) 3 times on the remote. The light blinks 3 times means match is successful.	Delete: Switch off the power, then switch on power, repeat again. Immediately short press on/off key (single zone remote) or zone key (multiple zone remote) 5 times on the remote. The light blinks 5 times means all matched remotes were deleted.
--	--

V5-PD Used As RF Remote Controller

The V5-PD can be matched with one or more RF RGB+CCT LED controllers/RF dimming drivers to remotely control other fixtures via one-button operation. For example, two V5-PD controllers match with each other for synchronized control. End user can choose the suitable match/delete ways.

Use the controller's Match key Match: Short press the controller/power supply's match key, immediately press the button. The LED indicator fast flash a few times means match is successful. Delete: Press and hold the controller/power supply's match key 5s, The LED indicator fast flash a few times means all matched remotes were deleted.	Use Power Restart Match: Switch off the power of the controller, then switch on power, repeat again. Immediately short press the button 3 times. The light blinks 3 times means match is successful. Delete: Switch off the power of the controller, then switch on power, repeat again. Immediately short press the button 5 times. The light blinks 5 times means all matched remotes were deleted.
--	--

Dynamic Mode List (RF remote control call-out only)

No.	Name	No.	Name
1	RGB jump	6	RGB fade in and out
2	RGB smooth	7	Red fade in and out
3	6 color jump	8	Green fade in and out
4	6 color smooth	9	Blue fade in and out
5	Color temperature smooth	10	White fade in and out

Dimming Curve

